



Bridgestone Product Management Interface 5.0

With the Bridgestone Product Management (BPM) Interface, you can add new items from the Bridgestone, Firestone, and Fuzion product lines to TireMaster, update existing items in TireMaster, and mark items in TireMaster as discontinued. This application can also be used to add, update, and discontinue items produced by other manufacturers.

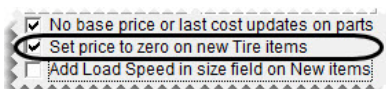
If you have questions about setting up or using the interface that this document doesn't answer, log a support call in Service Cloud at <http://asatire.force.com/login> or call TireMaster Support at **800-891-7437**.

- ◆ “What’s New” on page 1
- ◆ “Requirements” on page 2
- ◆ “Installing the Bridgestone Product Management Interface” on page 2
- ◆ “The BPM Update Process” on page 3
- ◆ “The Bridgestone Product Management Interface Screen” on page 3
- ◆ “Working with the BPM Interface” on page 8
- ◆ “Deleting Product Information” on page 16
- ◆ “Generating a BPM Log” on page 18
- ◆ “Using a Spreadsheet to Import Inventory from Another Manufacturer” on page 19

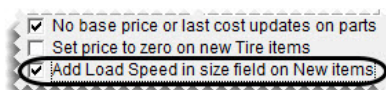
What’s New

Version 5.0 of the Bridgestone Product Management Interface includes several new enhancements to improve your work flow and support provided by TireMaster support.

- ◆ You can sort the item list by column heading.
- ◆ A new check box, **Set price to zero on new Tire items**, has been added to allow you to import a price of 0.00 into TireMaster.



- ◆ A new check box, **Add Load Speed in size field on New items**, has been added to allow you to import new tires with the load speed included after the size in the Inventory Maintenance screen size field.



Copyright 2016 by ASA Automotive Systems, Inc.
All Rights Reserved

No part of this document may be reproduced by any means – written, graphic, electronic or otherwise – without the written permission of ASA. ASA assumes no responsibility for any error or omissions occurring in this documentation. Program and documentation updates are subject to change without notice.

Note: If this check box is not selected, the load speed will appear only in the **Load/Speed** field on the TireMaster Inventory Maintenance screen.

- ♦ A data log option has been added to provide TireMaster Support additional information about any data load issues. When activated, a log file is created anytime new pricing files are received. This file includes information about the data being loaded into TireMaster and any errors that occur with the data load.

Requirements

To use version 5.0 of the Bridgestone Product Management Interface, you need the following:

- ♦ TireMaster 8.9.0 or TireMaster Point of Sale 3.8.9 (or a new version of either product) installed on your TireMaster server and workstations
- ♦ An Internet connection for your TireMaster server and any workstations used to manage inventory

Installing the Bridgestone Product Management Interface

The Bridgestone Product Management Interface must be installed on your TireMaster server. Installing it on one or more workstations is optional.

Accessing an Automatically-Deployed Installer

If your TireMaster system is set up to download automatically-deployed installers as part of the nightly backup process, the installer for the Bridgestone Product Management Interface is already available to you. Typically, installers are placed in one of the following locations:

- ♦ c:\TireMaster\apps
- ♦ c:\TMPOS\apps
- ♦ d:\QDSTM\apps
- ♦ c:\QDSTM\apps
- ♦ d:\TireMaster\apps
- ♦ d:\TMPOS\apps

Note: If your installers are downloaded to a different location, go to that folder instead.

To access an automatically-deployed installer

1. On the desktop of your TireMaster server, double-click **My Computer**. The My Computer screen appears.
2. Double-click the letter or icon for the drive in which TireMaster is installed. (Usually, it's the **c:** or **d:** drive.)
3. Double-click the TireMaster program folder (usually **c:\qdstm**, **d:\qdstm**, **c:\tiremaster**, **d:\tiremaster**, **c:\tmpos**, or **d:\tmpos**).

Double-click the **apps** folder, and locate the file **tmbpm00000000-05000000.exe**. Once you've located the installer, complete the installation. For instructions, see [“Completing the Bridgestone Product Management Interface Installation”](#) on page 3.

Downloading the Bridgestone Product Management Interface Installer

The installer for the Bridgestone Product Management Interface is available on the TireMaster Support site. Download the installer and save it on your computer.

Note: If you cannot download the installer from the TireMaster Support site, log a support call in Service Cloud at <http://asatire.force.com/login> or call TireMaster Support at **800-891-7437**.

To download the Bridgestone Product Management Interface installer

1. Log on to <http://support.tiremaster.com>.
2. On the menu, click **Download Programs**. The Download Center page appears.
3. Click **Bridgestone Product Management v5.0**. Depending on your browser, you'll be prompted to save or run the file.
4. Select the location where you want to save the installer, and click **Save**.
5. When the download is complete, click **Close**.

Completing the Bridgestone Product Management Interface Installation

Once you've located the installer for the BPM, you can complete the installation.

Note: Install the Bridgestone Product Management Interface on your TireMaster server.

To complete the Product Management Interface installation

1. Close all other applications.
2. Navigate to the location where you saved the Bridgestone Product Management Interface installer, and double-click **tmbpm0000000-05000000.exe**. The TireMaster Installation Program screen appears.
3. Click **OK**. The TireMaster - Search Results screen appears.
4. Select the TireMaster location in which you want to install the interface and click **Install**. The installation begins.
5. At the end of the installation, click **Finish**.

The BPM Update Process

Bridgestone periodically updates its product pricing and availability information. When new information is available, you can use the Bridgestone Product Management Interface to ensure that the latest Bridgestone, Firestone, and Fuzion product information is available in TireMaster.

When product information has changed, you'll be notified via the TireMaster message center. You can then open the BPM from within TireMaster and perform the update. Updates with the BPM can be performed once a month.

The Bridgestone Product Management Interface Screen

All of the tasks performed with the BPM occur on a single screen.

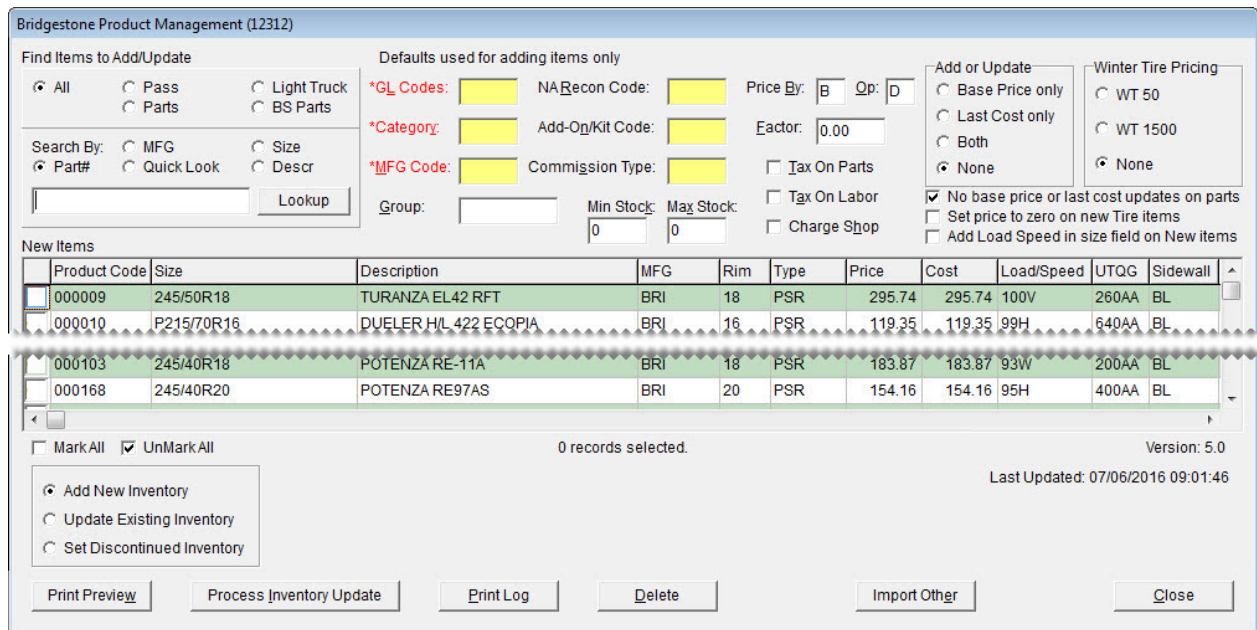


Figure 1: Bridgestone Product Management Screen

Item	Description
All	Retrieves all new items that match the parameter defined in the Search By area of the screen. For example, if you select All and search by the description Potenza, all new Potenza tires will be retrieved.
Pass	Retrieves new passenger tires that match the parameter defined in the Search By area of the screen.
Light Truck	Retrieves new light truck tires that match the parameter defined in the Search By area of the screen.
Parts	Retrieves new parts that match the parameter defined in the Search By area of the screen. Typically, this option is for parts in the Firestone Complete Fleetcare catalog (also referred to as P171).
BS Parts	Retrieves new parts that match the parameter defined in the Search By area of the screen. Typically, this option is for parts that are distributed by Bridgestone and can be ordered with the Electronic Inventory Replenishment Interface (EIR).
MFG	Lets you retrieve new items by manufacturer code.
Size	Lets you retrieve new items by size.
Part#	Lets you retrieve new items by part number.
Quick Look	Lets you retrieve new items by quick look code.
Descr	Lets you retrieve new items by description.
Lookup (field)	Lets you define a full or partial part number, size, quick look code, manufacturer code, or description for retrieving items to add to your inventory.

Item	Description
Lookup (button)	Lets you activate searches for items to add to your inventory.
*GL Codes	Lets you assign a GL code to the items you're adding to TireMaster. Note: Defining a GL code is required. Required settings are labeled in red.
*Category	Lets you assign a category to the items you're adding to TireMaster. Note: Defining a category is required. Required settings are labeled in red.
*MFG Code	Lets you assign a manufacturer code to the items you're adding to TireMaster. Note: Defining a manufacturer code is required. Required settings are labeled in red.
Group	Let you assign a group to the items you're adding to TireMaster.
NA Recon Code	Lets you assign a reconciliation code to the items you're adding to TireMaster.
Add-On/Kit Code	Lets you assign an add-on code to the items you're adding to TireMaster.
Commission Type	Lets you assign an inventory commission type code to the items you're adding to TireMaster.
Min Stock	Lets you define the minimum stocking level for the items you're adding to TireMaster.
Max Stock	Lets you define the maximum stocking level for the items you're adding to TireMaster.
Price By	Lets you define whether factor-based prices for the items you're adding to TireMaster will be calculated using base price or last cost: <ul style="list-style-type: none"> ◆ For base price, type the letter B. ◆ For last cost, type the letter C.
Op (operator)	Lets you define whether factor-based prices for the items you're adding to TireMaster will be calculated with a markup or a margin. <ul style="list-style-type: none"> ◆ For a markup, type the letter D. ◆ For a margin, type the letter M. Note: Information about markups and margins is available in the TireMaster help system and user guide.
Factor	Lets you define the factor that will be used to calculate the margin or markup for the items you're adding to TireMaster.
Tax On Parts	Lets you define whether to calculate sales tax on the parts prices for the items you're adding to TireMaster.
Tax On Labor	Lets you define whether to calculate sales tax on the labor prices for the items you're adding to TireMaster.
Charge Shop	Lets you collect shop charges when the items you're adding to TireMaster are sold.

Item	Description
Base Price only	Lets you do the following: <ul style="list-style-type: none"> ◆ Define only the base price for items being added to TireMaster (the last cost will be \$0.00). ◆ Change only the base price for items that are being updated.
Last Cost only	Lets you do the following: <ul style="list-style-type: none"> ◆ Define only the last cost for items being added to TireMaster (the base price will be \$0.00). ◆ Change only the last cost for items that are being updated.
Both	Lets you do the following: <ul style="list-style-type: none"> ◆ Define both the base price and last cost for items being added to TireMaster. ◆ Change both the base price and last cost of items that are being updated.
None	Prevents you from doing the following: <ul style="list-style-type: none"> ◆ Defining the base price and last cost for items being added to TireMaster. ◆ Changing the base price and last cost of items being updated.
No base price or last cost updates on parts	Prevents the base price and last cost of parts from being changed when those items are updated. This setting does not affect parts that are added to TireMaster.
Set price to zero on new Tire items	Lets you set the parts price for new tires to 0.00 before adding them to TireMaster.
Add Load Speed to size field on New items	Lets you add the Load Speed to the inventory item's size field in the size field in the Inventory Maintenance screen. Note: If the field is not checked the load speed will appear only in the Load/Speed field in Inventory Maintenance screen in TireMaster.
WT 50	Lets you use the Winter Tire 50 price as the base price, last cost, or both for tires added to TireMaster.
WT 1500	Lets you use the Winter Tire 1500 price as the base price, last cost, or both for tires added to TireMaster.
None	Prevents you from using Winter Tire 50 and Winter Tire 1500 prices as the base price, last cost, or both for tires added to TireMaster.
Unlabeled column	Lets you define which items to add to TireMaster by selecting the check boxes
Product Code	Displays the product codes for items that can be added to TireMaster.
Size	Displays the size of items that can be added to TireMaster.
Description	Displays the descriptions of items that can be added to TireMaster.
MFG	Displays the manufacturer codes for items that can be added to TireMaster.

Item	Description
Rim	Displays the rim sizes for items that can be added to TireMaster.
Type	<p>Displays one of the following codes for Bridgestone, Firestone, and Fuzion items that can be added to TireMaster:</p> <ul style="list-style-type: none"> ◆ <i>PSR</i> for passenger tires ◆ <i>LTR</i> for light truck tires ◆ <i>PARTS</i> for parts in the P171 catalog. ◆ <i>BSPARTS</i> for parts that can be ordered using EIR. <p>Displays one of the following, when another manufacturer's items are imported via a spreadsheet:</p> <ul style="list-style-type: none"> ◆ <i>New</i> for items that can be added to TireMaster ◆ <i>Update</i> for items that can be updated ◆ <i>Discontinued</i> for items that can be marked as discontinued
Price	<p>Displays the selling prices for items that can be added to TireMaster or updated. You can leave these values alone or you can change them.</p> <p>Note: Disregard changing these amounts for Bridgestone, Firestone, and Fuzion tires. Price changes made to those items in the BPM do not override the selling prices already established for those items in TireMaster.</p>
Cost	Displays your cost for items that can be added to TireMaster or updated. You can leave these values alone or change them. The numbers entered here can be used as the base price, last cost, or both.
Load/Speed	Displays the load index and speed rating for tires that can be added to TireMaster. Load indexes and speed ratings can be edited.
UTQG	Displays Uniform Tire Quality Grade ratings for tires that can be added to TireMaster. UTQG ratings can be edited.
Sidewall	Displays the sidewall style for tires that can be added to TireMaster. Sidewall styles can be edited.
Warranty	Displays the tread life warranty for tires that can be added to TireMaster. Tread life warranties can be edited.
Load Range	Displays the load range for tires that can be added to TireMaster. Load ranges can be edited.
Winter Tire 50	Displays the prices available to dealers who qualify for the Winter Tire 50 pricing model.
Winter Tire 1500	Displays the prices available to dealers who qualify for the Winter Tire 1500 pricing model.
Mark All	Lets you select the check boxes for all of the items listed. When you initially open the Bridgestone Product Management Interface screen, all items are selected by default.

Item	Description
UnMark All	Lets you clear the check boxes for all of the items listed on the screen.
Add New Inventory	Lets you add new items to TireMaster.
Update Existing Inventory	Lets you update the cost and product web page links for existing items in TireMaster. Note: If the No price or cost updates on parts check box (upper-right of the screen) is selected, the base price and last cost for parts will not be changed.
Set Discontinued Inventory	Lets you set the discontinued flag for existing items in TireMaster.
Print Preview	Lets you print a list of the items that will be added to TireMaster.
Process Inventory Update	Lets you complete the following: <ul style="list-style-type: none"> ◆ Adding items to TireMaster ◆ Updating existing items ◆ Marking items as discontinued
Print Log	Lets you print an activity log for a single day or a date range.
Delete	Lets you delete items from the inventory and pricing files distributed by Bridgestone. Once an item is deleted, it will no longer be available to add to your inventory. If you delete items in error, TireMaster Support can assist you with restoring the items.
Import Other	Lets you add new items and update existing items distributed by other manufacturers.
Close	Lets you close the Bridgestone Product Management Interface screen.

Working with the BPM Interface

You can use the BPM Interface to add new items to your inventory, update existing items, and discontinue items.

- ◆ [“Adding Items with the BPM” on page 8](#)
- ◆ [“Updating Items with the BPM” on page 12](#)
- ◆ [“Discontinuing Items with the BPM” on page 14](#)

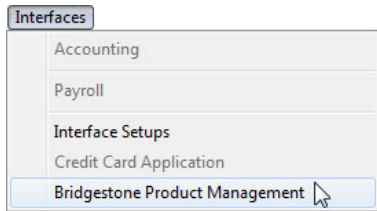
Note: You can make changes to your inventory on the server and any workstations on which the Bridgestone Product Management Interface is installed.

Adding Items with the BPM

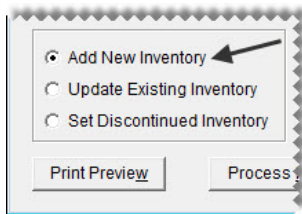
When you use the BPM to add items to your inventory, you need to define which GL code, category, and manufacturer code to assign to those items. Additional settings for new items are optional.

To add items your inventory with the BPM

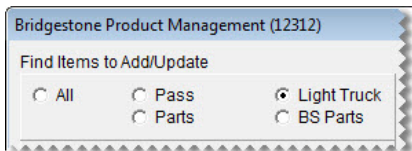
1. From the **Interfaces** menu, select **Bridgestone Product Management**. The Bridgestone Product Management screen opens and displays the items that can be added to your inventory.



2. Make sure **Add New Inventory** is selected.

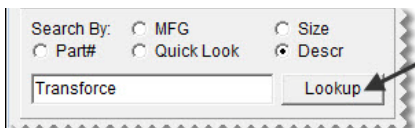


3. Narrow down the items displayed to only those that meet specific requirements.
 - a. For passenger tires, light truck tires, P171 parts, or Bridgestone parts, select the applicable radio button. Otherwise, leave **All** selected.

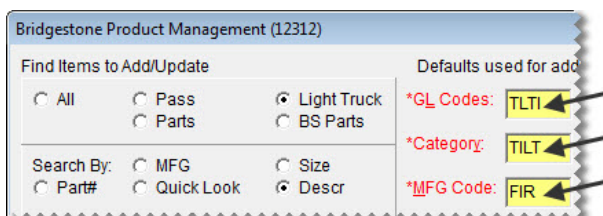


Note: The **Parts** radio button is for P171 parts, and **BS Parts** radio button is for Bridgestone parts.

- ◆ Type a full or partial part number, manufacturer code, quick look code, size, or description. Then click **Lookup**. Otherwise, make sure the **Lookup** field is blank.



4. Choose the GL code, category, and manufacturer code that will be assigned to the new item or items. To assign a code, click the applicable field and press **[v]**. Then select a code from the list that appears, and click **OK**.



Note: Defining a GL code, category, and manufacturer code is required to add items. Required settings are labeled in red and include an asterisk (*).

5. Define optional settings as needed:

- ◆ For the reconciliation, add-on, and inventory commission type codes, click the applicable fields, press , and make selections from the lists that appear.
- ◆ For the group, stocking levels, and factor-based price calculation settings, type your entries in the applicable fields.
- ◆ For the sales tax, shop supply, and parts price and cost settings, select or clear the check boxes as needed.
- ◆ To define how to handle base price and last cost, select the applicable radio button.
- ◆ To identify the winter tire pricing plan for which you qualify, select the applicable radio button.

The screenshot shows the 'Bridgestone Product Management (12312)' window. It features several sections for configuration:

- Find Items to Add/Update:** Includes radio buttons for 'All', 'Pass', 'Parts', 'Light Truck', and 'BS Parts'. Search options include 'MFG', 'Part#', 'Quick Look', 'Size', and 'Descr'. A search box contains 'Transforce' and a 'Lookup' button.
- Defaults used for adding items only:**
 - *GL Codes: TLTI
 - NA Recon Code: FS
 - Price By: B QP: D
 - *Category: TILT
 - Add-On/Kit Code: LT
 - Factor: .70
 - *MFG Code: FIR
 - Commission Type: (empty)
 - Group: TIRES
 - Min Stock: 4
 - Max Stock: 16
- Add or Update:** Radio buttons for 'Base Price only', 'Last Cost only', 'Both', and 'None'. A checked checkbox for 'No base price or last cost updates on parts'.
- Winter Tire Pricing:** Radio buttons for 'WT 50', 'WT 1500', and 'None'. A checked checkbox for 'Set price to zero on new Tire items'.
- Other checkboxes: 'Tax On Parts', 'Tax On Labor', and 'Charge Shop'.

6. Select the check boxes for the items that you want to add to your inventory.

New Items			
	Product Code	Size	Description
<input checked="" type="checkbox"/>	189565	LT215/85R16	TRANSFORCE AT
<input checked="" type="checkbox"/>	189667	LT225/75R16	TRANSFORCE AT
<input checked="" type="checkbox"/>	224150	LT225/75R17	TRANSFORCE AT
<input type="checkbox"/>	189650	LT235/75R15	TRANSFORCE AT
<input type="checkbox"/>	191265	LT235/80R17	TRANSFORCE AT
<input type="checkbox"/>	189633	LT235/85R16	TRANSFORCE AT
<input checked="" type="checkbox"/>	192234	LT245/70R17	TRANSFORCE AT
<input checked="" type="checkbox"/>	200173	LT245/70R17	TRANSFORCE AT
<input checked="" type="checkbox"/>	189582	LT245/75R16	TRANSFORCE AT
<input checked="" type="checkbox"/>	205222	LT245/75R17	TRANSFORCE AT
<input checked="" type="checkbox"/>	200190	LT265/70R17	TRANSFORCE AT
<input checked="" type="checkbox"/>	189599	LT265/75R16	TRANSFORCE AT
<input checked="" type="checkbox"/>	196858	LT265/75R16	TRANSFORCE AT
<input checked="" type="checkbox"/>	200207	LT275/65R18	TRANSFORCE AT

At the bottom of the table, there are checkboxes for 'Mark All' (checked) and 'UnMark All' (unchecked).

Tip: To save time, select the **Mark All** check box and then clear the check boxes for any items that you don't want to add. If you need to clear the check boxes for all items, select **UnMark All** (Mark All UnMark All).

7. Update the following amounts as needed:

- ◆ If you need to change the selling price for an item that's being added to your inventory, type the amount in the **Price** field.

- ◆ If you need to change your cost for an item that's being added to your inventory, type the amount in the **Cost** field.

Price	Cost	Load/Speed	UTQG	Sidewall
129.42	129.42	115R		BL
132.49	132.49	115R		BL
143.04	143.04	116R		BL
116.27	116.27	104R		BL

Note: If you update an amount and then close the screen, the changes will not be saved.

- ◆ If you want to change the amount in the **Price** field to 0.00 so you can price the item in TireMaster later, select the **Set price to zero on new Tire items** check box.

No base price or last cost updates on parts
 Set price to zero on new Tire items
 Add Load Speed in size field on New items

8. Update the load index/speed rating, UTQG rating, sidewall style, tread life warranty, and load range as needed.

	Load/Speed	UTQG	Sidewall	Warranty	LoadRange	WinterTire 50	WinterT
27	104R		BL	50000		0.00	
09	120R		BL	50000		0.00	
60	120R		BL			0.00	

9. To add the Load/Speed to the end of the size in the TireMaster Inventory Maintenance size field, select the check box for **Add Load Speed in size field on New items**.

No base price or last cost updates on parts
 Set price to zero on new Tire items
 Add Load Speed in size field on New items

Note: When the check box is not selected the load/speed will appear only in the **Load/Speed** field on the TireMaster Inventory Maintenance screen.

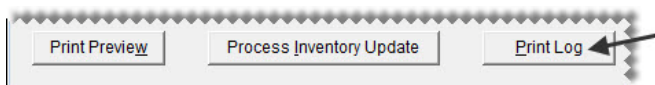
10. If you're participating in one of the winter tire pricing plans, type your cost for winter tires that are being added to your inventory in the **WinterTire 50** or the **WinterTire1500** field. If you cannot see the winter tire fields, scroll to the right.

WinterTire 50	WinterTire 1500
0.00	0.00
0.00	0.00

11. For a list of items that will be added, click **Print Preview**.

12. Click **Process Inventory Update**.

13. If the default group message appears, do one of the following. Otherwise, disregard this step.
 - ♦ Click **No** and add a group.
 - ♦ Click **Yes** to continue without adding a group.
14. If the factor warning appears, do one of the following. Otherwise, disregard this step.
 - ♦ Click **Yes** to continue without a factor.
 - ♦ Click **No**, type a value in the **Factor** field, and click **Process Inventory Update** (again).
A confirmation message appears.
15. Close the confirmation message. TireMaster prompts you to run the Pricing Wizard.
16. If you want to use the Pricing Wizard to set prices for the updated items, click **Yes**. Otherwise, click **No**. Information about using the Pricing Wizard is available in the TireMaster help system and user guide.
17. To verify that items were added, click **Print Log**. Otherwise, disregard this step. For more information, see [“Generating a BPM Log” on page 18](#).



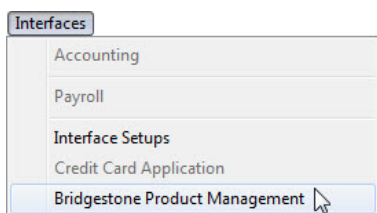
18. Close the Bridgestone Product Management screen.

Updating Items with the BPM

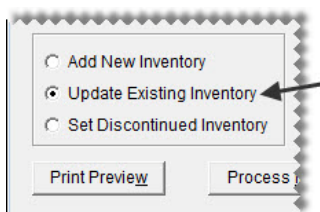
Updating items with the BPM Interface ensures that the cost for those items is current in TireMaster. You can also update item information such as the load index/speed rating and tread life warranty.

To update items in your inventory with the BPM

1. From the **Interfaces** menu, select **Bridgestone Product Management**. The Bridgestone Product Management screen opens and displays the items that can be added to your inventory.

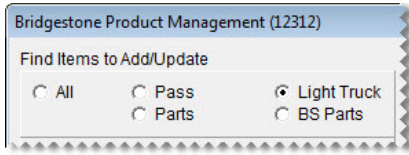


2. Select **Update Existing Inventory**. The BPM displays the items that can be updated.



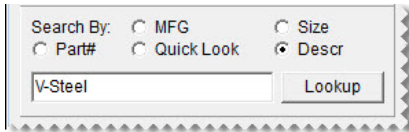
3. If you don't want to update everything all at once, narrow down the items displayed to only those that meet specific requirements.

- a. For passenger tires, light truck tires, P171 parts, or Bridgestone parts, select the applicable radio button. Otherwise, leave **All** selected.



Note: The **Parts** radio button is for P171 parts, and **BS Parts** radio button is for Bridgestone parts.

- b. Type a full or partial part number, manufacturer code, quick look code, size, or description. Then click **Lookup**. Otherwise, make sure the **Lookup** field is blank.



- 4. Select the check boxes for the items you want to update.

New Items			
	Product Code	Size	Description
<input checked="" type="checkbox"/>	154075	LT245/75R16	V-STEEL RIB 265
<input checked="" type="checkbox"/>	154075	LT245/75R16	V-STEEL RIB 265
<input checked="" type="checkbox"/>	154075	LT245/75R16	V-STEEL RIB 265
<input checked="" type="checkbox"/>	154075	LT245/75R16	V-STEEL RIB 265
<input checked="" type="checkbox"/>	157791	LT245/75R16	V-STEEL RIB 265
<input checked="" type="checkbox"/>	157791	LT245/75R16	V-STEEL RIB 265
<input checked="" type="checkbox"/>	157791	LT245/75R16	V-STEEL RIB 265
<input checked="" type="checkbox"/>	157791	LT245/75R16	V-STEEL RIB 265

Tip: To save time, select the **Mark All** check box and then clear the check boxes for any items that you don't want to add. If you need to clear the check boxes for all items, select **UnMark All**

(Mark All UnMark All).

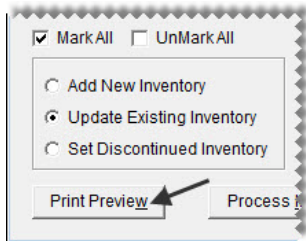
- 5. Update prices and costs as needed.

Price	Cost	Load/Speed	UTQG	Sidewall
160.32	160.32	121R		OWL
162.59	162.59	121R		OWL
139.96	139.96	123R		BL

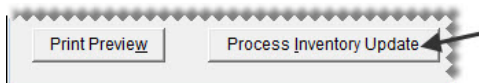
Note: Disregard changing the price for Bridgestone, Firestone, and Fuzion tires. Price changes made to those items in the BPM do not override the selling prices already established for those items in TireMaster.

- 6. Update other settings, such as the load index/speed rating or UTQG ratings, as needed.

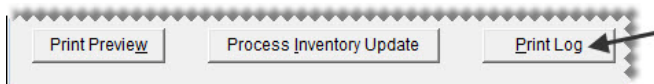
- For a list of items that will be updated, click **Print Preview**. When the Report Window opens, print the BPM Inventory File Preview report.



- Click **Process Inventory Update**. A confirmation message appears.



- To continue the update, click **Yes**. A second confirmation message appears.
- Close the confirmation message. TireMaster prompts you to run the Pricing Wizard.
- If you want to use the Pricing Wizard to set prices for the updated items, click **Yes**. Otherwise, click **No**. Information about using the Pricing Wizard is available in the TireMaster help system and user guide.
- To verify that items were added, click **Print Log**. Otherwise, disregard this step. For more information, see [“Generating a BPM Log” on page 18](#).



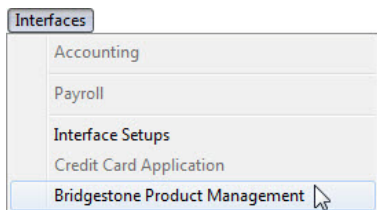
- Close the Bridgestone Product Management screen.

Discontinuing Items with the BPM

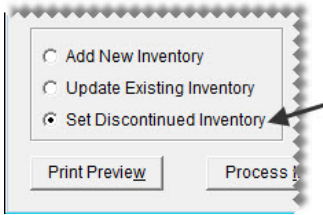
Discontinuing items with the BPM Interface marks those items as discontinued in TireMaster.

To discontinue items with the BPM

- From the **Interfaces** menu, select **Bridgestone Product Management**. The Bridgestone Product Management screen opens and displays the items that can be added to your inventory.

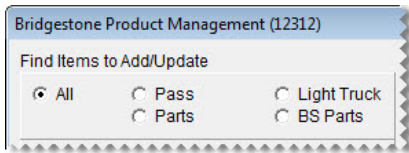


2. Select **Set Discontinued Inventory**.



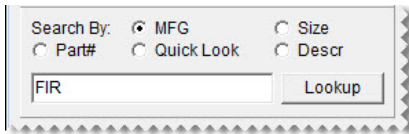
3. If you don't want to discontinue everything all at once, narrow down the items displayed to only those that meet specific requirements.

- a. For passenger tires, light truck tires, P171 parts, or Bridgestone parts, select the applicable radio button. Otherwise, leave **All** selected.



Note: The **Parts** radio button is for P171 parts, and **BS Parts** radio button is for Bridgestone parts.

- b. Type a full or partial part number, manufacturer code, quick look code, size, or description. Then click **Lookup**. Otherwise, make sure the **Lookup** field is blank.



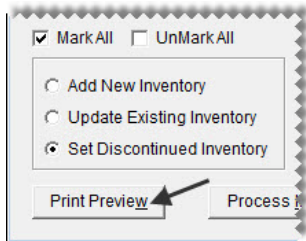
4. Select the check boxes for the items that you want to discontinue.

New Items			
Product Code	Size	Description	
<input checked="" type="checkbox"/>	077223	225/50R18	FIREHAWK GT Z
<input checked="" type="checkbox"/>	094954	P195/60R14	FIREHAWK GT H
<input checked="" type="checkbox"/>	118133	P215/65R15	FIREHAWK INDY 500
<input checked="" type="checkbox"/>	121372	245/35R20	FIREHAWK GT Z
<input checked="" type="checkbox"/>	125197	P195/65R15	AFFINITY TOURING S4 FF
<input checked="" type="checkbox"/>	137488	245/35R19	FH WIDE OVAL INDY 500
<input checked="" type="checkbox"/>	137573	245/40R20	FH WIDE OVAL INDY 500
<input checked="" type="checkbox"/>	148189	175/65R14	FR380
<input checked="" type="checkbox"/>	148206	185/65R14	FR380
<input checked="" type="checkbox"/>	223946	LT225/75R16	WINTERFORCE LT
<input checked="" type="checkbox"/>	223997	LT245/75R16	WINTERFORCE LT
<input checked="" type="checkbox"/>	224014	LT265/75R16	WINTERFORCE LT
<input checked="" type="checkbox"/>	224031	LT235/85R16	WINTERFORCE LT
<input checked="" type="checkbox"/>	232276	225/65R17	DESTINATION ST

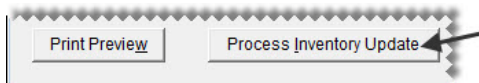
Tip: To save time, select the **Mark All** check box and then clear the check boxes for any items that you don't want to add. If you need to clear the check boxes for all items, select **UnMark All**

(Mark All UnMark All).

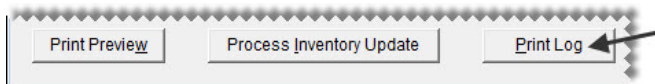
5. For a list of items that will be updated, click **Print Preview**. When the Report Window opens, print the BPM Inventory File Preview report.



6. Click **Process Inventory Update**. A confirmation message appears.



7. To continue the update, click **Yes**. A second confirmation message appears.
8. Close the confirmation message. TireMaster prompts you to run the Pricing Wizard.
9. If you want to use the Pricing Wizard to set prices for the updated items, click **Yes**. Otherwise, click **No**. Information about using the Pricing Wizard is available in the TireMaster help system and user guide.
10. To verify that items were added, click **Print Log**. Otherwise, disregard this step. For more information, see [“Generating a BPM Log” on page 18](#).



11. Close the Bridgestone Product Management screen.

Deleting Product Information

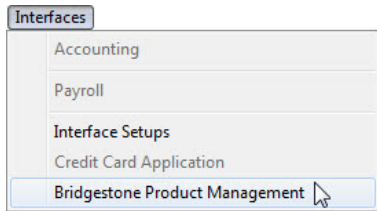
When you open the Bridgestone Product Management Interface, it lists all of the Bridgestone, Firestone, and Fuzion items that can be added to your inventory. This information is retrieved from a set of files that Bridgestone typically distributes to dealers once a month.

The size of the files is large and can therefore lead to slowdowns when it's loaded in to TireMaster. You can improve data retrieval times by removing the items you don't plan to stock from your set of dealer files. Otherwise, the same items will continue to be listed every time you open the Bridgestone Product Management Interface.

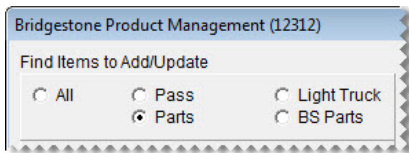
Note: If you delete items in error, TireMaster Support can assist you with restoring those items.

To delete product information from the dealer files

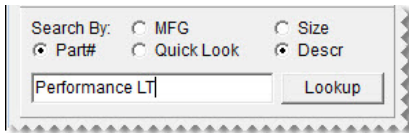
1. From the **Interfaces** menu, select **Bridgestone Product Management**. The Bridgestone Product Management screen opens and displays the items that can be added to your inventory.



2. To narrow down the number of items listed, do the following:
 - ◆ On the **Find Items to Add** panel, leave **All** selected or choose **Pass**, **Light Truck**, **Parts**, or **BS Parts**.

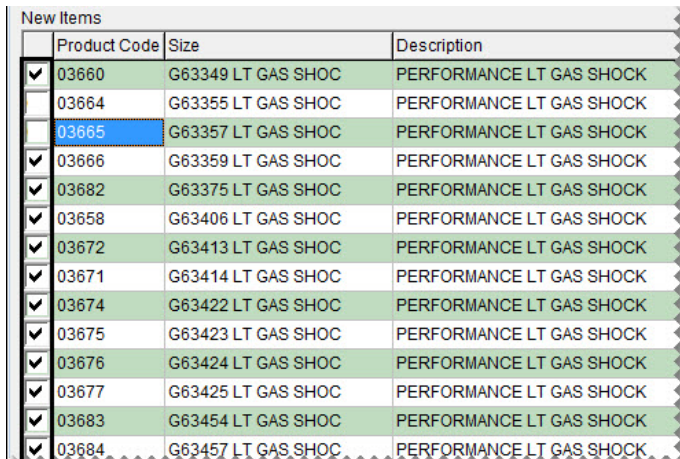


- ◆ Type a full or partial part number, manufacturer code, quick look code, size, or description. Then click **Lookup**. Otherwise, make sure the **Lookup** field is blank.



Note: To restore the list to all items, select **All**. Then delete the code you typed and click **Lookup**.

3. Select the check boxes for the items that you want to delete.

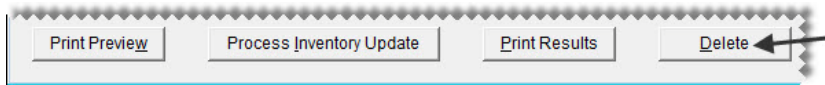


New Items			
	Product Code	Size	Description
<input checked="" type="checkbox"/>	03660	G63349 LT GAS SHOC	PERFORMANCE LT GAS SHOCK
<input checked="" type="checkbox"/>	03664	G63355 LT GAS SHOC	PERFORMANCE LT GAS SHOCK
<input checked="" type="checkbox"/>	03665	G63357 LT GAS SHOC	PERFORMANCE LT GAS SHOCK
<input checked="" type="checkbox"/>	03666	G63359 LT GAS SHOC	PERFORMANCE LT GAS SHOCK
<input checked="" type="checkbox"/>	03682	G63375 LT GAS SHOC	PERFORMANCE LT GAS SHOCK
<input checked="" type="checkbox"/>	03658	G63406 LT GAS SHOC	PERFORMANCE LT GAS SHOCK
<input checked="" type="checkbox"/>	03672	G63413 LT GAS SHOC	PERFORMANCE LT GAS SHOCK
<input checked="" type="checkbox"/>	03671	G63414 LT GAS SHOC	PERFORMANCE LT GAS SHOCK
<input checked="" type="checkbox"/>	03674	G63422 LT GAS SHOC	PERFORMANCE LT GAS SHOCK
<input checked="" type="checkbox"/>	03675	G63423 LT GAS SHOC	PERFORMANCE LT GAS SHOCK
<input checked="" type="checkbox"/>	03676	G63424 LT GAS SHOC	PERFORMANCE LT GAS SHOCK
<input checked="" type="checkbox"/>	03677	G63425 LT GAS SHOC	PERFORMANCE LT GAS SHOCK
<input checked="" type="checkbox"/>	03683	G63454 LT GAS SHOC	PERFORMANCE LT GAS SHOCK
<input checked="" type="checkbox"/>	03684	G63457 LT GAS SHOC	PERFORMANCE LT GAS SHOCK

Tip: To save time, select the **Mark All** check box and then clear the check boxes for any items that you don't want to add. If you need to clear the check boxes for all items, select **UnMark All**

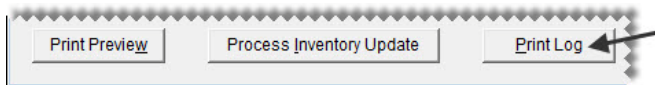
(MarkAll UnMarkAll).

4. Click **Delete**. A confirmation message appears.



Tip: Write down the product code for one or two of the items you want to delete. Once the deletion is complete, you can verify the items were removed by trying to look up the deleted items.

5. Click **Yes**. The BPM reopens and lists remaining items that are available to add to your inventory.
6. To verify that items were added, click **Print Log**. Otherwise, disregard this step. For more information, see [“Generating a BPM Log” on page 18](#).



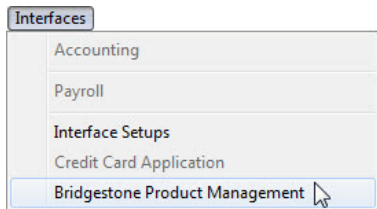
7. Repeat steps 2 through 6 to delete additional items, or close the Bridgestone Product Management Interface screen.

Generating a BPM Log

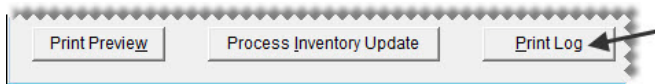
Generating a BPM log can help you verify whether items were added, updated, discontinued, or deleted.

To generate a BPM log

1. If the Bridgestone Product Management screen isn't already open, select **Bridgestone Product Management** from the **Interfaces** menu.

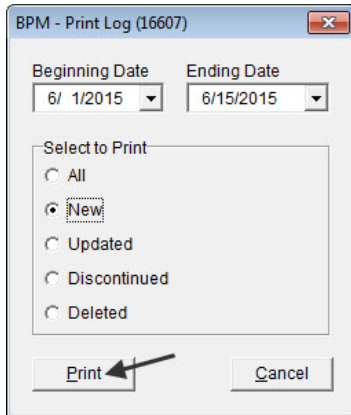


2. Click **Print Log**. The BPM - Print Log screen appears.



3. Define the date or date range for which you want to view BPM activity. For a single day, select the same date for the beginning and end of the range.
4. Define the types of activity to include on the log by selecting the **New**, **Updated**, **Discontinued**, or **Deleted** radio button. For all activity types, leave **All** selected.

5. Click **Print**. The Report Window opens.



6. Print the log and close the Report Window.

Using a Spreadsheet to Import Inventory from Another Manufacturer

The BPM can be used to add, update, and discontinue items from manufacturers that are not part of the Bridgestone family. To work with products from another manufacturer, import a spreadsheet, make any needed changes for the new items, and process the update.

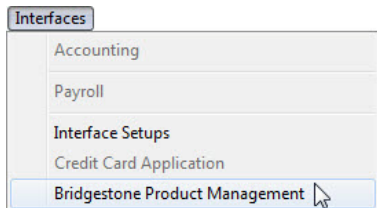
- ◆ [“Importing Items from Another Manufacturer” on page 19](#)
- ◆ [“Spreadsheet Requirements” on page 22](#)

Importing Items from Another Manufacturer

When you use the BPM to add items to your inventory from another manufacturer, you need to define which GL code, category, and manufacturer code to assign to those items. Additional settings for new items are optional.

To import inventory from another manufacturer

1. From the **Interfaces** menu, select **Bridgestone Product Management**. The Bridgestone Product Management screen opens and displays the items (from Bridgestone, Firestone, and Fuzion) that can be added to your inventory.




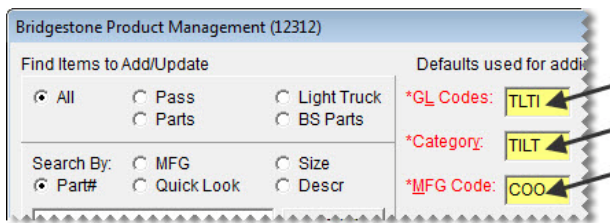
2. Retrieve the inventory data file.
 - a. Click **Import Other**. A confirmation screen appears.




- b. Review the information about the data file requirements. If you need to adjust your data file, click **No** and make the needed changes. If your data is formatted correctly, click **Yes** to continue. The Load Import file screen appears.
- c. Select the file and click **Open**. The Bridgestone Product Management screen lists the items in the file. The entries in the **Type** column identify new items, items that can be updated, and items that can be discontinued.

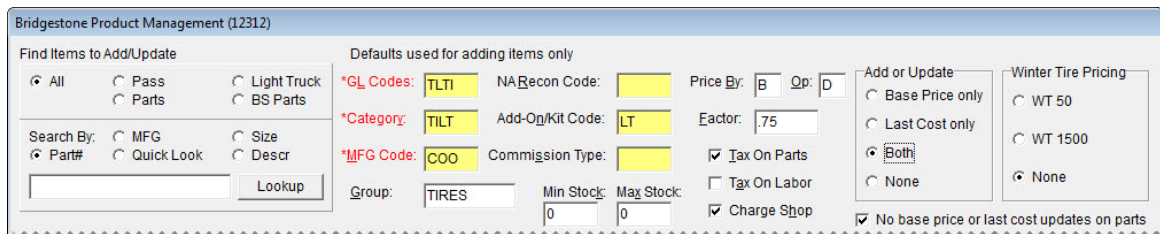
Note: If you don't see the file you want to use, select the directory in which it's located from the **Look in** drop-down. If the file is still not listed, change the selection in the **Files of type** drop-down.

3. Choose the GL code, category, and manufacturer code that will be assigned to the new item or items. To assign a code, click the applicable field and press . Then select a code from the list that appears, and click **OK**.



Note: Defining a GL code, category, and manufacturer code is required to add items. Required settings are labeled in red and include an asterisk (*).

4. Define optional settings as needed:
 - ◆ For the reconciliation, add-on, and inventory commission type codes, click the applicable fields, press , and make selections from the lists that appear.
 - ◆ For the group, stocking levels, and factor-based price calculation settings, type your entries in the applicable fields.
 - ◆ For the sales tax, shop supply, and parts price and cost settings, select or clear the check boxes as needed.
 - ◆ To define how to handle base price and last cost, select the applicable radio button.



Note: You can disregard the winter tire options, which are used only for the Bridgestone and Firestone product lines.

- If there are items on the list that you do not want to add to your inventory, clear the check boxes for those items.

New Items			
	Product Code	Size	Description
<input checked="" type="checkbox"/>	90000021382	LT265/70R17	Discover A/TW
<input checked="" type="checkbox"/>	90000022188	LT235/85R16	Discover A/TW
<input checked="" type="checkbox"/>	90000022206	LT255/75R17	Discover A/TW
<input checked="" type="checkbox"/>	90000022159	LT265/70R16	Discover A/TW
<input checked="" type="checkbox"/>	90000022183	LT245/75R16	Discover A/TW

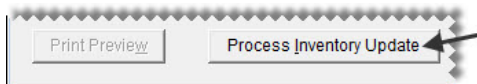
Note: To select all items, select the **Mark All** check box. To clear the check boxes for all items, select **UnMark All** Mark All UnMark All .

- Update the following amounts as needed:
 - If you need to change the selling price for an item that's being added to your inventory, type the amount in the **Price** field.
 - If you need to change your cost for an item that's being added to your inventory or updated, type the amount in the **Cost** field.

Price	Cost	Load/Speed	UTQG	Sidewall	Wa
243.70	199.99	121S		BLK	
182.67	138.68	120R		BLK	
197.45	153.55	115S		BLK	
191.45	147.90	112T		BLK	
202.01	158.46	120R		BLK	

Note: If you edit an amount and then close the screen, the changes will not be saved.

- Click **Process Inventory Update**.



- If the default group message appears, do one of the following:
 - Click **No** and add a group.
 - Click **Yes** to continue without adding a group.
- If the factor warning appears, do one of the following. Otherwise, disregard this step.
 - Click **Yes** to continue without a factor.
 - Click **No**, type a value in the **Factor** field, and click **Process Inventory Update** (again). A confirmation message appears.
- Close the confirmation message. TireMaster prompts you to run the Pricing Wizard.
- If you want to use the Pricing Wizard to set prices for the updated items, click **Yes**. Otherwise, click **No**. Information about using the Pricing Wizard is available in the TireMaster help system and user guide.
- For a list of changes made during the update, click **Print Results**.
- Close the Bridgestone Product Management screen.

Spreadsheet Requirements

To successfully load data from a manufacturer other than Bridgestone, Firestone, or Fuzion, using a spreadsheet, it needs to meet the following requirements:

- ◆ The file must be saved in either the .csv or .txt format.
- ◆ The column names must be included in the header row as follows:
STATUS|MFGSBU|PRODUCT CODE|PART NUMBER|SIZE|NOTUSED|
DESCRIPTION|INVENTORY|MFG|CATEGORY|RIM|NOTUSED|NOTUSED|
QUICKLOOK|COST|PRICE|NOTES|LOADSPEED|UTQG|SIDEWALL|WARRANTY|
LOADRANGE
- ◆ The column names and data must be separated with the pipe symbol (|).

Column names in the header row.	A	B	C	D	E	F	G	H
1	STATUS	MFGSBU	PRODUCT CODE	PART NUMBER	SIZE	NOTUSED	DESCRIPTION	INVENTORY
2	N	90000021382	90000021382	LT265/70R17		Discover A/TW	Y COO TILT 17	
3	N	90000022188	90000022188	LT235/85R16		Discover A/TW	Y COO TILT 16	
4	N	90000022206	90000022206	LT255/75R17		Discover A/TW	Y COO TILT 17	

Figure 2: BPM Spreadsheet Requirements

Table 1 lists the column names for BPM spreadsheets and the type of data to include in those columns.

Note: Do not disregard the columns named **Notused**. They need to be included in the spreadsheet for the data import to work properly.

Table 1: BPM Spreadsheet Columns

Column	Description
STATUS	Indicate whether an item is new, being updated, or being discontinued. <ul style="list-style-type: none"> ◆ For new items, type N. ◆ For updated items, type U. ◆ For discontinued items, type D.
MFGSBU	Not used. For this column, nothing is required between the pipe symbols (). The manufacturer is identified with an entry in another column instead.
PRODUCT CODE	Define an item's product code.
PART NUMBER	Define an item's part number.
SIZE	Define an item's size.
NOTUSED	Not used. For this column, nothing is required between the pipe symbols ().
DESCRIPTION	Define an item's description.

Table 1: BPM Spreadsheet Columns

Column	Description
INVENTORY	Indicate whether an item is inventoriable. <ul style="list-style-type: none">◆ For inventoriable items, type Y.◆ For noninventoriable items, type N.
MFG	Identify an item's manufacturer. For this column, type the manufacturer code used in TireMaster.
CATEGORY	Define an item's inventory category.
RIM	Define an item's rim size.
NOTUSED	Not used. For this column, nothing is required between the pipe symbols ().
NOTUSED	Not used. For this column, nothing is required between the pipe symbols ().
QUICKLOOK	Define the quick look code for an item being added to TireMaster.
COST	Define an item's cost. For existing item, the cost will be changed to this amount.
PRICE	Define the selling (parts) price for an item being added to TireMaster.
NOTES	Define notes, if any, for an item being added to TireMaster.
LOADSPEED	Define the load speed for an item being added to TireMaster.
UTQG	Define the Uniform Tire Quality Grade assigned to an item being added to TireMaster.
SIDEWALL	Define the sidewall style for an item being added to TireMaster.
WARRANTY	Define the tread life warranty for an item being added to TireMaster.
LOADRANGE	Define the load range for an item being added to TireMaster.