



# Inventory Manager

With the Inventory Manager, you can add new items to your inventory and update or discontinue items that you already sell. Inventory data can be loaded from spreadsheets or from Tire Wholesale Warehouse, if you're running the TWW Interface. If you have questions about setting up and using the Inventory Manager that this document doesn't answer, log a support request (use the link at [support.tiremaster.com](http://support.tiremaster.com)) or call TireMaster Support at 800-891-7437.

## Contents

- ◆ “System Requirements” on page 1
- ◆ “Installing the Inventory Manager” on page 1
- ◆ “Inventory Management Screen” on page 2
- ◆ “Working with the Inventory Manager” on page 7
- ◆ “Spreadsheet Requirements” on page 14

## System Requirements

To use the Inventory Manager, you need to be on TireMaster 8.9.0 or TireMaster Point of Sale 3.8.9 (or a newer version of either product).

## Installing the Inventory Manager

The Inventory Manager must be installed on your TireMaster server. Installing it on one or more workstations is optional.


### Accessing an Automatically-Deployed Installer

If your TireMaster system is set up to download automatically-deployed installers as part of the nightly backup process, the installer for the Inventory Manager is already available to you. Typically, installers are placed in one of the following locations:

- ◆ c:\TireMaster\apps
- ◆ c:\TMPOS\apps
- ◆ d:\QDSTM\apps
- ◆ c:\QDSTM\apps
- ◆ d:\TireMaster\apps
- ◆ d:\TMPOS\apps

**Note:** If your installers are downloaded to a different location, go to that folder instead.

### To access an automatically-deployed installer

1. Right-click  and select **File Explorer** from the menu that appears.
2. In the Quick Access navigation pane, scroll to This PC.

**Note:** If File Explorer opened the This PC screen instead, disregard this step.

3. Double-click the letter or icon for the drive that TireMaster is installed in. (Usually, it's the **c:** or **d:** drive.)
4. Double-click the **TireMaster**, **qdstm**, or **tmpos** program folder.
5. Double-click the **tmapps** folder, and locate the file **tmim00000000-05000000.exe**. Once you have located the installer, complete the installation or update. For instructions, see “[Completing the Inventory Manager Installation](#)” on page 2.

## Downloading the Inventory Manager Installer

The installer for the Inventory Manager is available for download from the TireMaster Support site. When you download the installer, save it on your TireMaster server. To log on to the TireMaster Support Site, you need your TireMaster customer number and password. If you no longer have them, log an online support request (use the link at [support.tiremaster.com](http://support.tiremaster.com)) or call TireMaster Support at **800-891-7437**.

### To download the Inventory Manager installer

1. Log on to <http://support.tiremaster.com>.
2. On the menu, click **Download Programs**. The Download Center page appears.
3. Click the link for the Inventory Manager. Depending on your browser, you'll be prompted to save or run the file.
4. Select the location where you want to save the installer, and click **Save**.
5. When the download is complete, click **Close**.

## Completing the Inventory Manager Installation

Once you've located the installer for the Inventory Manager, you can complete the installation.

**Note:** Install the Inventory Manager on your TireMaster server.

### To complete the Inventory Manager installation

1. Close all other applications.
2. Navigate to the location where you saved the Inventory Manager installer, and double-click **tmim00000000-05000000.exe**. The TireMaster Installation Program screen appears.
3. Click **OK**. The TireMaster - Search Results screen appears.
4. Select the TireMaster location in which you want to install the interface and click **Install**. The installation begins.
5. At the end of the installation, click **Finish**.

## Inventory Management Screen

All of the tasks that can be performed with the Inventory Manager take place on a single screen.

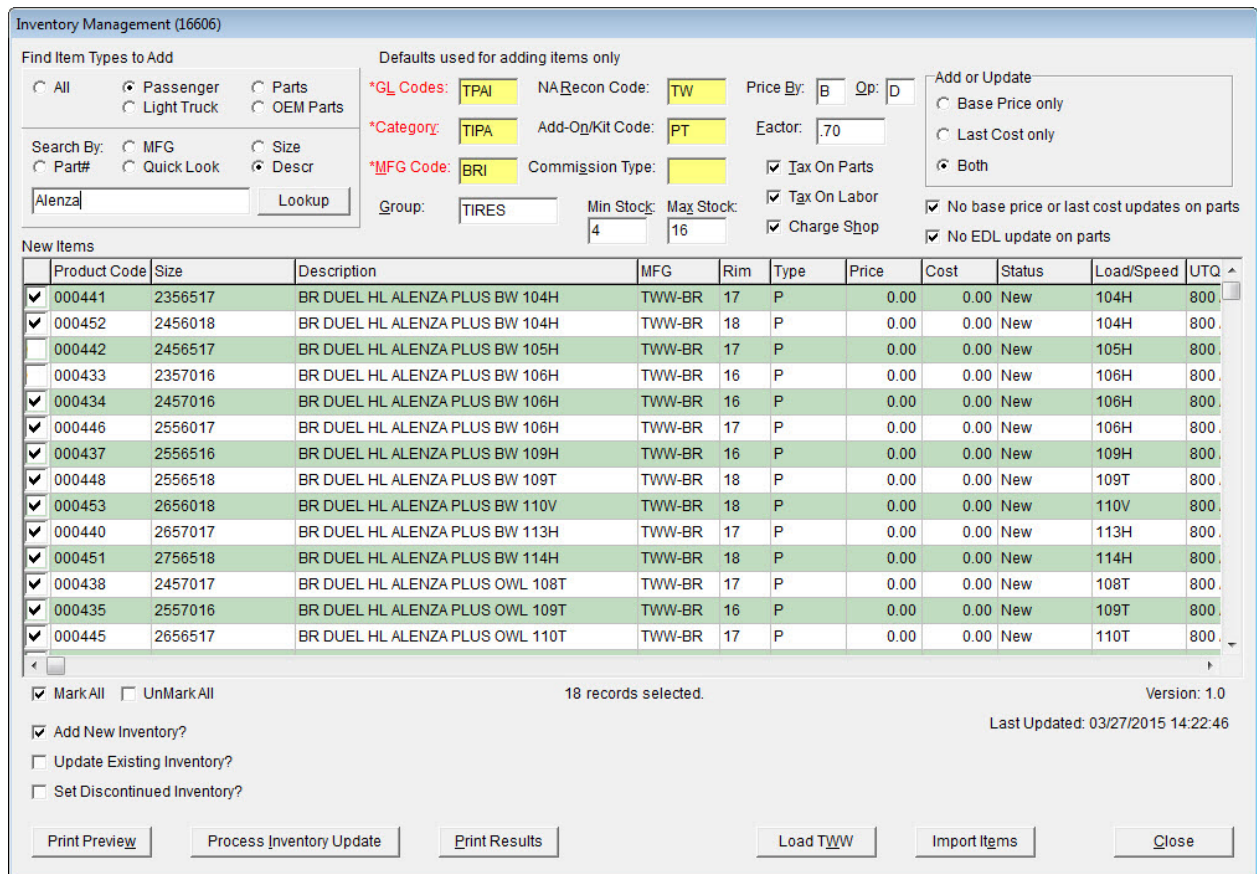


Figure 1: Inventory Management Screen

Item	Description
<b>All</b>	Displays all items that match the parameter defined in the <b>Search By</b> area of the screen.
<b>Passenger</b>	Displays only passenger tires that match the parameter defined in the <b>Search By</b> area of the screen.
<b>Light Truck</b>	Displays only light truck tires that match the parameter defined in the <b>Search By</b> area of the screen.
<b>Parts</b>	Displays only parts that match the parameter defined in the <b>Search By</b> area of the screen.
<b>OEM Parts</b>	Displays only the original equipment manufacturer parts that match the parameter defined in the <b>Search By</b> area of the screen.
<b>MFG</b>	Displays only items produced by a specific manufacturer.
<b>Size</b>	Displays only items that match a specific size.
<b>Part #</b>	Displays only items that match a specific part number (product code).
<b>Quick Look</b>	Displays only items that match a specific quick look code.

<b>Item</b>	<b>Description</b>
<b>Descr</b>	Displays only items with a specific description.
<b>Lookup (field)</b>	Lets you define a full or partial manufacturer code, size, part number, quick look code, or description for the items displayed.
<b>Lookup (button)</b>	Activates item searches based on the defined parameter (such as manufacturer or size).
<b>*GL Codes</b>	Lets you assign a GL code to the items you're adding to TireMaster. <b>Note:</b> Defining a GL code is required. Required settings are labeled in red.
<b>*Category</b>	Lets you assign a category to the items you're adding to TireMaster. <b>Note:</b> Defining a category is required. Required settings are labeled in red.
<b>*MFG Code</b>	Lets you assign a manufacturer code to the items you're adding to TireMaster. <b>Note:</b> Defining a manufacturer code is required. Required settings are labeled in red.
<b>Group</b>	Let you assign a group to the items you're adding to TireMaster.
<b>NA Recon Code</b>	Lets you assign a reconciliation code to the items you're adding to TireMaster.
<b>Add-On Code/ Kit</b>	Lets you assign an add-on code to the items you're adding to TireMaster.
<b>Commission Type</b>	Lets you assign an inventory commission type code to the items you're adding to TireMaster.
<b>Min Stock</b>	Lets you define the minimum stocking level for the items you're adding to TireMaster.
<b>Max Stock</b>	Lets you define the maximum stocking level for the items you're adding to TireMaster.
<b>Price By</b>	Lets you define whether factor-based prices for the items you're adding to TireMaster will be calculated using base price or last cost: <ul style="list-style-type: none"> <li>◆ For base price, type the letter <b>B</b>.</li> <li>◆ For last cost, type the letter <b>C</b>.</li> </ul>
<b>Op</b>	Lets you define whether factor-based prices for the items you're adding to TireMaster will be calculated with a markup or a margin. <ul style="list-style-type: none"> <li>◆ For a markup, type the letter <b>D</b>.</li> <li>◆ For a margin, type the letter <b>M</b>.</li> </ul> <b>Note:</b> Information about markups and margins is available in the TireMaster help system and user guide.
<b>Factor</b>	Lets you define the factor that will be used to calculate the margin or markup for the items you're adding to TireMaster.

<b>Item</b>	<b>Description</b>
<b>Tax on Parts</b>	Lets you define whether to calculate sales tax on the parts prices for the items you're adding to TireMaster.
<b>Tax on Labor</b>	Lets you define whether to calculate sales tax on the labor prices for the items you're adding to TireMaster.
<b>Charge Shop</b>	Lets you collect shop charges when the items you're adding to TireMaster are sold.
<b>Base Price Only</b>	Lets you do the following: <ul style="list-style-type: none"> <li>◆ Define only the base price for items being added to TireMaster (the last cost will be \$0.00).</li> <li>◆ Change only the base price for items being updated.</li> </ul>
<b>Last Cost Only</b>	Lets you do the following: <ul style="list-style-type: none"> <li>◆ Define only the last cost for items being added to TireMaster (the base price will be \$0.00).</li> <li>◆ Change only the last cost for items being updated.</li> </ul>
<b>Both</b>	Lets you do the following: <ul style="list-style-type: none"> <li>◆ Define both the base price and last cost for items being added to TireMaster.</li> <li>◆ Change both the base price and last cost of items being updated.</li> </ul>
<b>No base price or last cost updates on parts</b>	Prevents the base price and last cost of parts from being changed when those items are updated. This setting does not affect parts that are added to TireMaster. <b>Note:</b> When this check box and the <b>No EDL update on parts</b> check box are both selected, there is nothing for the Inventory Manager to update.
<b>No EDL update on parts</b>	Prevents the parts portion of the EDL price from being changed when those items are updated. This setting does not affect parts that are added to TireMaster. EDL, which stands for everyday low, is the total of the parts price and labor price. <b>Note:</b> When this check box and the <b>No base price or last cost update on parts</b> check box are both selected, there is nothing for the Inventory Manager to update
<b>Unlabeled Column</b>	Lets you define which items to add to TireMaster by selecting the check boxes.
<b>Product Code</b>	Displays the product codes for items that can be added to TireMaster.
<b>Size</b>	Displays the size of items that can be added to TireMaster.
<b>Description</b>	Displays the descriptions of items that can be added to TireMaster.
<b>MFG</b>	Displays the manufacturer codes for items that can be added to TireMaster.
<b>Rim</b>	Displays the rim sizes for items that can be added to TireMaster.

<b>Item</b>	<b>Description</b>
<b>Type</b>	<p>Displays one of the following codes for items imported from a spreadsheet:</p> <ul style="list-style-type: none"> <li>◆ <i>PSR</i> for passenger tires</li> <li>◆ <i>LTR</i> for light truck tires</li> <li>◆ <i>PARTS</i> for parts</li> <li>◆ <i>OEM</i> for original equipment manufacturer parts</li> </ul> <p>Displays one of the following codes for items imported from TWV:</p> <ul style="list-style-type: none"> <li>◆ <i>P</i> for passenger tires</li> <li>◆ <i>LT</i> for light truck tires</li> <li>◆ <i>PARTS</i> for parts</li> <li>◆ <i>OEM</i> for original equipment manufacturer parts</li> </ul>
<b>Price</b>	Displays the selling prices for items that can be added to TireMaster. You can leave these values alone or you can change them.
<b>Cost</b>	Displays your cost for the items that can be added to TireMaster. For existing items, this column displays new cost amounts. You can leave these values alone or you can change them. The numbers entered here can be used as the base price, last cost, or both, depending on your selection in the <b>Add or Update</b> panel (in the upper-right of the screen).
<b>Status</b>	<p>Displays one of the following:</p> <ul style="list-style-type: none"> <li>◆ <i>New</i> for items that can be added to TireMaster</li> <li>◆ <i>Update</i> for items that can be updated</li> <li>◆ <i>Discontinued</i> for items that can be marked as discontinued</li> </ul>
<b>Load/Speed</b>	Displays the load index and speed rating for tires that can be added to TireMaster.
<b>UTQG</b>	Displays Uniform Tire Quality Grade ratings for tires that can be added to TireMaster.
<b>Sidewall</b>	Displays the sidewall style for tires that can be added to TireMaster.
<b>Warranty</b>	Displays the tread life warranty for tires that can be added to TireMaster.
<b>Load Range</b>	Displays the load range for tires that can be added to TireMaster.
<b>Mark All</b>	Lets you select the check boxes for all of the items listed.
<b>UnMark All</b>	Lets you clear the check boxes for all of the items listed on the screen.
<b>Add New Inventory?</b>	Lets you add new items to TireMaster.
<b>Update Existing Inventory?</b>	<p>Lets you update the cost for existing items in TireMaster.</p> <p><b>Note:</b> When the <b>No price or cost updates on parts</b> and the <b>No EDL update on parts</b> check boxes are both selected, there is nothing for the Inventory Manager to update.</p>

Item	Description
<b>Set Discontinued Inventory?</b>	Lets you set the discontinued flag for existing items in TireMaster.
<b>Print Preview</b>	Lets you print a list of the items that will be added to TireMaster.
<b>Process Inventory Update</b>	Lets you do the following, depending on which check boxes are selected: <ul style="list-style-type: none"> <li>◆ Add new items to TireMaster</li> <li>◆ Update existing items in TireMaster</li> <li>◆ Mark items as discontinued</li> </ul>
<b>Print Results</b>	Lets you print a list of changes made during updates.
<b>Load TWW</b>	Retrieves inventory data from TWW. This data includes items that can be added to TireMaster, updated, and marked as discontinued.
<b>Import Items</b>	Lets you add new items and update existing items distributed by other manufacturers.  <b>Note:</b> If you're using the Bridgestone Product Management Interface (BPM) in addition to the TWW Interface, this button is disabled. In this scenario, use the BPM to import items from other manufacturers.
<b>Close</b>	Lets you close the Inventory Manager screen.

## Working with the Inventory Manager

You can use the Inventory Manager to add new items to your inventory and update or discontinue existing items. For most vendors, inventory is added, updated, or deleted by importing data from a spreadsheet. If you're running the TWW Interface, you also have the option to load product data from Tire Wholesale Warehouse.

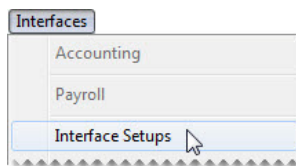
**Note:** If you're importing data with a spreadsheet, it needs to be formatted in a specific manner. For more information, see [“Spreadsheet Requirements” on page 14.](#)

### Adding Items with the Inventory Manager

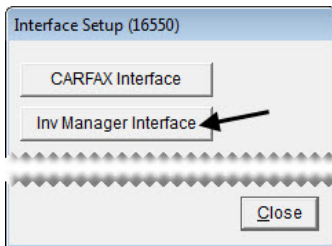
When you add items with the Inventory Manager, you need to define which GL codes, categories, and manufacturer codes to assign to them. Additional settings for new items are optional. You can add items with the Inventory Manager on the server and any workstations on which it is installed.

#### To add items with the Inventory Manager

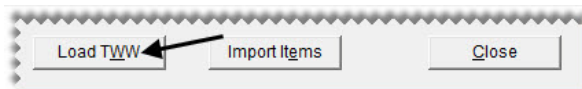
1. Open the Inventory Manager.
  - a. From the **Interfaces** menu, select **Interface Setups**.



- b. Click **Inv Manager Interface** on the Interface Setup screen.

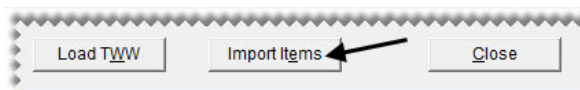


2. If you're going to work with items from TWW, click **Load TWW**. To work with items distributed by another manufacturer, go to step 3 instead.



3. To work with items distributed by a manufacturer that is *not* TWW, complete the following steps. If you've loaded items from TWW, disregard this step.

- a. Click **Import Items**. A confirmation message appears.



**Note:** If you're using the Bridgestone Product Management Interface (BPM) in addition to the TWW Interface, this button is disabled. In this scenario, use the BPM to import items from other manufacturers.

- b. Review the formatting requirements listed on the message. If you need to adjust your data file, click **No** and make the needed changes. If your data is formatted correctly, click **Yes** to continue. The **Load Import File** screen appears. For information about spreadsheet formatting, see [“Spreadsheet Requirements” on page 14](#).

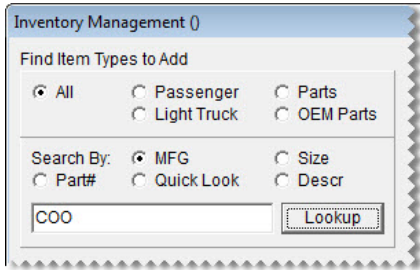
- c. Select the name of the file and the file type. Then click **Open**. The Inventory Manager lists the items in the file. The entries in the **Type** column identify new items, items that can be updated, and items that can be discontinued.

**Note:** If you don't see the file you want to use, select the directory in which it's located from the **Look in** drop-down (at the top of the screen). If TireMaster cannot access the data file, make sure it's no longer open in Excel<sup>®</sup> or Notepad.

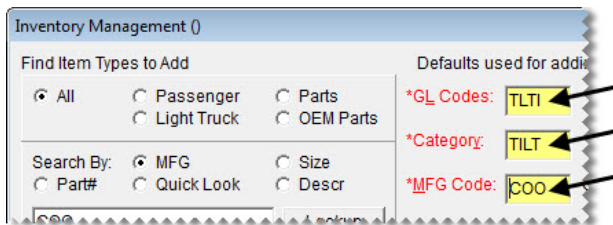
4. Narrow down the items displayed to only those that meet specific requirements, if needed.
- a. For passenger tires only, light truck tires only, parts only, or OEM parts only, select the applicable radio button. Otherwise, leave **All** selected.



- b. Type a full or partial part number, manufacturer code, quick look code, size, or description. Then click **Lookup**. Otherwise, make sure the **Lookup** field is blank.

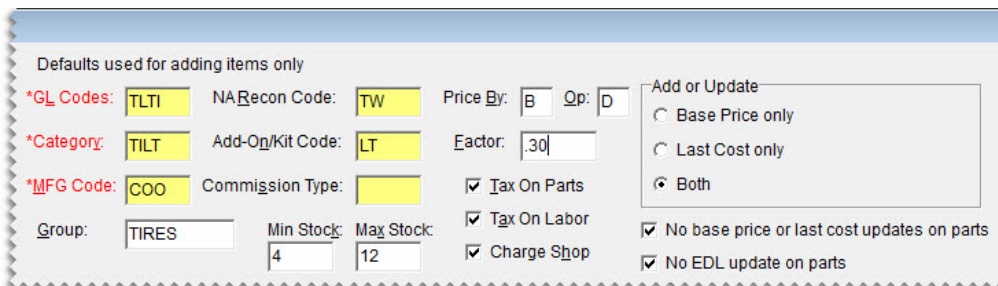


5. Choose the GL code, category, and manufacturer code that will be assigned to the new item or items. To assign a code, click the applicable field and press . Then select the code from the list that appears, and click **OK**.



**Note:** Defining a GL code, category, and manufacturer code is required to add items. Required settings are labeled in red and include an asterisk (\*).

6. Define optional settings as needed:
- ◆ For the reconciliation, add-on, and inventory commission type codes, click the applicable fields, press , and make selections from the lists that appear.
  - ◆ For the group, stocking levels, and factor-based price calculation settings, type your entries in the applicable fields.
  - ◆ For the sales tax, shop supply, and parts price and cost settings, select or clear the check boxes as needed.
  - ◆ To define how to handle base price and last cost, select the applicable radio button.



- Identify the items you want to add to your inventory by selecting or clearing the check boxes as needed.

	Product Code	Size	Description
<input checked="" type="checkbox"/>	90000021382	LT265/70R17	Discover A/TW
<input checked="" type="checkbox"/>	90000022159	LT265/70R16	Discover A/TW
<input checked="" type="checkbox"/>	90000022183	LT245/75R16	Discover A/TW
<input checked="" type="checkbox"/>	90000022188	LT235/85R16	Discover A/TW
<input checked="" type="checkbox"/>	90000022206	LT255/75R17	Discover A/TW

**Note:** To select all items, select the **Mark All** check box. To clear the check boxes for all items, select **UnMark All** ( Mark All  UnMarkAll).

- Update the following amounts as needed:

- If you need to change the selling price for an item that's being added to your inventory, type the amount in the **Price** field.
- If you need to change your cost for an item that's being added to your inventory, type the amount in the **Cost** field.

Price	Cost	Status	Load/Speed	UTQG
243.70	170.59	New	121S	UTQG
191.45	134.06	New	112T	UTQG
202.01	141.41	New	120R	UTQG
182.67	127.87	New	120R	UTQG
197.45	138.22	New	115S	UTQG

**Note:** If you update an amount and then close the screen, the changes will not be saved.

- Make sure **Add New Inventory** is selected.

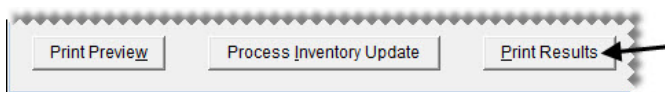
- Make sure the **Update Existing Inventory** and the **Set Discontinued Inventory** check boxes are clear. Otherwise existing items in TireMaster will be updated and discontinued when you add the new items.

Add New Inventory?  
 Update Existing Inventory?  
 Set Discontinued Inventory?

- For a list of the items that will be updated, click **Print Preview**. When the Report Window opens, print the Inventory Manager File Preview.

- Click **Process Inventory Update**.

13. If the default group message appears, do one of the following:
  - ◆ Click **No** and add a group.
  - ◆ Click **Yes** to continue without adding a group.
14. If the factor warning appears, do one of the following. Otherwise, disregard this step.
  - ◆ Click **Yes** to continue without a factor.
  - ◆ Click **No**, type a value in the **Factor** field, and click **Process Inventory Update** (again).  
A confirmation message appears.
15. Close the confirmation message. TireMaster prompts you to run the Pricing Wizard.
16. If you want to use the Pricing Wizard to set prices for the new items, click **Yes**. Otherwise, click **No**.  
Information about using the Pricing Wizard is available in the TireMaster help system and user guide.
17. For a list of changes made to your inventory, click **Print Results**.



18. Close the Inventory Manager.

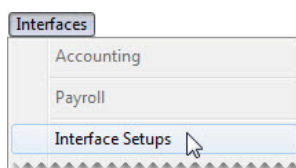
## Updating Items with the Inventory Manager

Updating items with the Inventory Manager ensures that the costs for those items are current. You can update your inventory with the Inventory Manager on the server and any workstations on which it is installed.

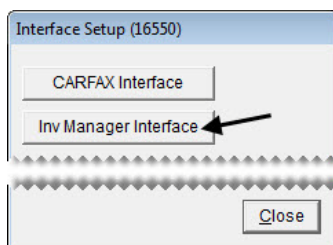
**Note:** For a successful update, there needs to be an entry in the **Vendor Part Number 1** field and it must match the item's product code.

### To update items with the Inventory Manager

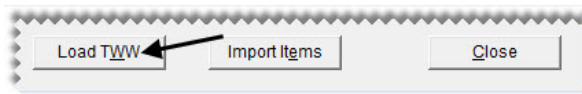
1. Open the Inventory Manager.
  - a. From the **Interfaces** menu, select **Interface Setups**.



- b. Click **Inv Manager Interface** on the Interface Setup screen.

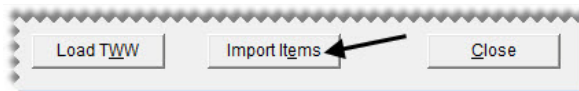


2. If you're going to work with items from TWW, click **Load TWW**. To work with items distributed by another manufacturer, go to step 3 instead.



3. To work with items distributed by a manufacturer that is *not* TWW, complete the following steps. If you've loaded items from TWW, disregard this step.

- a. Click **Import Items**. A confirmation message appears.

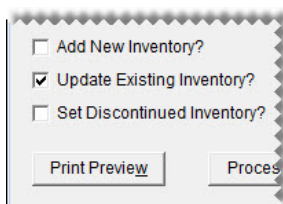


**Note:** If you're using the Bridgestone Product Management Interface (BPM) in addition to the TWW Interface, this button is disabled. In this scenario, use the BPM to import items from other manufacturers.

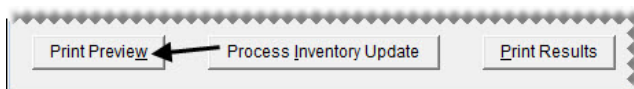
- b. Review the formatting requirements listed on the message. If you need to adjust your data file, click **No** and make the needed changes. If your data is formatted correctly, click **Yes** to continue. The **Load Import File** screen appears. For information about spreadsheet formatting, see ["Spreadsheet Requirements"](#) on page 14.
- c. Select the name of the file and the file type. Then click **Open**. The Inventory Manager lists the items in the file. The entries in the **Type** column identify new items, items that can be updated, and items that can be discontinued.

**Note:** If you don't see the file you want to use, select the directory in which it's located from the **Look in** drop-down (at the top of the screen). If TireMaster cannot access the data file, make sure it's no longer open in Excel<sup>®</sup> or Notepad.

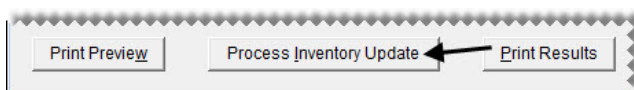
4. Select the **Update Existing Inventory** check box.
5. Clear the **Add New Inventory** and **Set Discontinued Inventory** check boxes.



6. For a list of the items that will be updated, click **Print Preview**. When the Report Window opens, print the Inventory Manager File Preview.

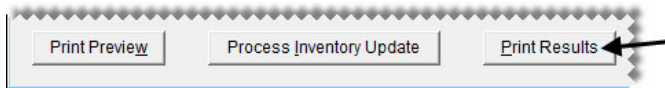


7. Click **Process Inventory Update**. A confirmation message appears.



8. To continue the update, click **Yes**. A second confirmation message appears.

9. Close the confirmation message. TireMaster prompts you to run the Pricing Wizard.
10. If you want to use the Pricing Wizard to set prices for the updated items, click **Yes**. Otherwise, click **No**. Information about using the Pricing Wizard is available in the TireMaster help system and user guide.
11. For a list of changes made to your inventory, click **Print Results**.



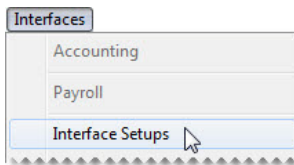
12. Close the Inventory Manager.

## Discontinuing Items with the Inventory Manager

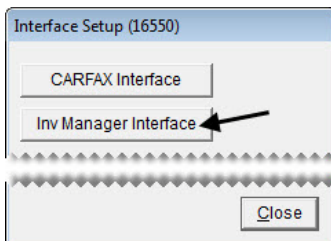
Discontinuing items with the Inventory Manager marks them as discontinued in TireMaster. You can discontinue items with the Inventory Manager on the server and any workstations on which it is installed.

### To discontinue items with the Inventory Manager

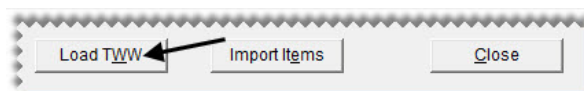
1. Open the Inventory Manager.
  - a. From the **Interfaces** menu, select **Interface Setups**.



- b. Click **Inv Manager Interface** on the Interface Setup screen.

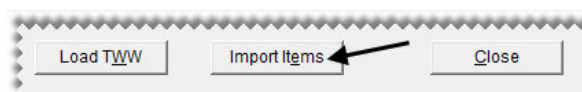


2. If you're going to work with items from TWW, click **Load TWW**. To work with items distributed by another manufacturer, go to step 3 instead.



3. To work with items distributed by a manufacturer that is *not* TWW, complete the following steps. If you've loaded items from TWW, disregard this step.

- a. Click **Import Items**. A confirmation message appears.

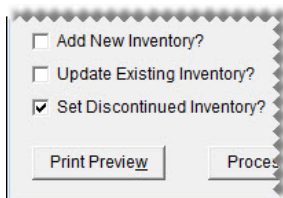


**Note:** If you're using the Bridgestone Product Management Interface (BPM) in addition to the TWW Interface, this button is disabled. In this scenario, use the BPM to import items from other manufacturers.

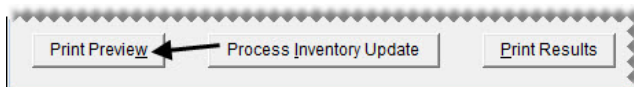
- b. Review the formatting requirements listed on the message. If you need to adjust your data file, click **No** and make the needed changes. If your data is formatted correctly, click **Yes** to continue. The **Load Import File** screen appears. For information about spreadsheet formatting, see [“Spreadsheet Requirements” on page 14](#).
- c. Select the name of the file and the file type. Then click **Open**. The Inventory Manager lists the items in the file. The entries in the **Type** column identify new items, items that can be updated, and items that can be discontinued.

**Note:** If you don't see the file you want to use, select the directory in which it's located from the **Look in** drop-down (at the top of the screen). If TireMaster cannot access the data file, make sure it's no longer open in Excel® or Notepad.

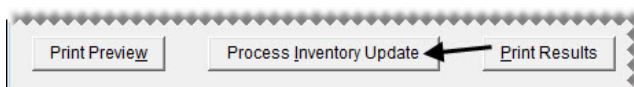
4. Select the **Set Discontinued Inventory** check box.
5. Clear the **Add New Inventory** and **Update Existing Inventory** check boxes.



6. For a list of the items that will be discontinued, click **Print Preview**. When the Report Window opens, print the Inventory Manager File Preview.



7. Click **Process Inventory Update**. A confirmation message appears.



8. To continue the update, click **Yes**. A second confirmation message appears.
9. Close the confirmation message. TireMaster prompts you to run the Pricing Wizard.
10. Click **No**.

## Spreadsheet Requirements

To successfully load data into the Inventory Manager from a spreadsheet, it needs to meet the following requirements:

- ◆ The file must be saved in either the .csv or .txt format.
- ◆ The column names must be included in the header row.
- ◆ The column names and data must be separated with the pipe symbol (|).

	A	B	C	D	E	F	G	H
1	STATUS	MFG	PRODUCT CODE	PART NUMBER	SIZE	NOTUSED	DESCRIPTION	INVEN
2	N	COO	90000021382	90000021382	LT265/70R17	NOTUSED	Discover A/TW	Y
3	N	COO	90000022188	90000022188	LT235/85R16	NOTUSED	Discover A/TW	Y
4	N	COO	90000022206	90000022206	LT255/75R17	NOTUSED	Discover A/TW	Y

**Figure 2: Inventory Manager Spreadsheet Formatting Requirements**

Table 1 lists the column names for Inventory Manager spreadsheets and type of data to include in those columns.

**Note:** Do not disregard the columns named **Notused**. They need to be included in the spreadsheet for the data import to work properly.

**Table 1: Inventory Manager**

Column	Description
<b>STATUS</b>	Indicate whether an item is new, being updated, or being discontinued. <ul style="list-style-type: none"> <li>◆ For new items, type <b>N</b>.</li> <li>◆ For updated items, type <b>U</b>.</li> <li>◆ For discontinued items, type <b>D</b>.</li> </ul> <b>Note:</b> An entry in this column is required.
<b>MFG</b>	Identify an item’s manufacturer. For this column, type the manufacturer code used in TireMaster. <b>Note:</b> An entry in this column is required.
<b>PRODUCT CODE</b>	Define an item’s product code. <b>Note:</b> An entry in this column is required.
<b>PART NUMBER</b>	Define an item’s part number. <b>Note:</b> An entry in this column is required.
<b>SIZE</b>	Define an item’s size. <b>Note:</b> An entry in this column is required.
<b>NOTUSED</b>	For this column, nothing is required between the pipe symbols (     ).
<b>DESCRIPTION</b>	Define an item’s description. <b>Note:</b> An entry in this column is required.

**Table 1: Inventory Manager**

<b>Column</b>	<b>Description</b>
<b>INVENTORY</b>	<p>Indicate whether an item is inventoriable.</p> <ul style="list-style-type: none"> <li>◆ For inventoriable items, type <b>Y</b>.</li> <li>◆ For noninventoriable items, type <b>N</b>.</li> </ul> <p><b>Note:</b> An entry in this column is required.</p>
<b>MFG</b>	<p>Identify an item’s manufacturer. For this column, type the manufacturer code used in TireMaster.</p> <p><b>Note:</b> An entry in this column is required.</p>
<b>NOTUSED</b>	For this column, nothing is required between the pipe symbols (     ).
<b>RIM</b>	Define an item’s rim size.
<b>TYPE</b>	<p>Classify an item.</p> <ul style="list-style-type: none"> <li>◆ For passenger tires, type <b>PSR</b>.</li> <li>◆ For light truck tires, type <b>LTR</b>.</li> <li>◆ For parts, type <b>PARTS</b>.</li> <li>◆ For OEM Parts, type <b>OEM</b>.</li> </ul> <p><b>Note:</b> An entry in this column is required.</p>
<b>NOTUSED</b>	For this column, nothing is required between the pipe symbols (     ).
<b>NOTUSED</b>	For this column, nothing is required between the pipe symbols (     ).
<b>QUICKLOOK</b>	<p>Define the quick look code for an item being added to TireMaster.</p> <p><b>Note:</b> An entry in this column is required.</p>
<b>COST</b>	<p>Define an item’s cost. For existing items, the cost will be changed to this amount.</p> <p><b>Note:</b> An entry in this column is required. You can set the cost to \$0 in the spreadsheet and change it with the Pricing Wizard once you’ve finished adding or updating items with the Inventory Manager.</p>
<b>PRICE</b>	<p>Define the selling (parts) price for an item being added to TireMaster.</p> <p><b>Note:</b> An entry in this column is required. You can set the price to \$0 in the spreadsheet and change it with the Pricing Wizard once you’ve finished adding or updating items with the Inventory Manager.</p>
<b>NOTES</b>	Define notes, if any, for an item being added to TireMaster.
<b>LOADSPEED</b>	<p>Define the load speed for an item being added to TireMaster. If you do not have the information for this column, use the entry <b>NA</b>.</p> <p><b>Note:</b> An entry in this column is required.</p>



**Table 1: Inventory Manager**

<b>Column</b>	<b>Description</b>
<b>UTQG</b>	Define the Uniform Tire Quality Grading ranking for an item being added to TireMaster. If you do not have the information for this column, use the entry <b>NA</b> . <b>Note:</b> An entry in this column is required.
<b>SIDEWALL</b>	Define the sidewall style for an item being added to TireMaster. If you do not have the information for this column, use the entry <b>NA</b> . <b>Note:</b> An entry in this column is required.
<b>WARRANTY</b>	Define the tread life warranty for an item being added to TireMaster. If you do not have the information for this column, use the entry <b>NA</b> . <b>Note:</b> An entry in this column is required.
<b>LOADRANGE</b>	Define the load range for an item being added to TireMaster. If you do not have the information for this column, use the entry <b>NA</b> . <b>Note:</b> An entry in this column is required.

